

[Subscribe](#)[Past Issues](#)[Translate ▼](#)[RSS](#)[View this email in your browser](#)

*Happy New Year!*



On December 30th, Superior, Louisville, and Boulder County were impacted by devastating fires. Needless to say, the inhabitants of these communities were impacted in many significant ways. This includes the youngest to the oldest, families, single people, our friends, neighbors and those with whom we interact daily.

Connections can be deepened in communities when devastation such as this occurs. These connections are witnessed by all of us as we watched the entire crisis unfold. We saw the humanity in everyone who responded on that day and in the following days, putting themselves in harm's way. And we continue to see so many reaching out to donate resources of all kinds. And those who provide a hug and offer compassion and sincere, kind words to acknowledge a person's trauma.



*President Biden, first lady Jill Biden, and Governor Jared Polis toured the area ravaged by the Marshall Fire and spoke with residents who lost their homes.*

*January 2022*

**Here is a snapshot of the amazing effort of staff in a residence in Louisville that was noticed and expressed in our local paper -**

[Subscribe](#)[Past Issues](#)[Translate ▼](#)[RSS](#)

## deserve praise

I'm writing to recognize the heroic efforts of the employees of Balfour Cherrywood Village memory care community on McCaslin in Louisville. As the Marshall Fire approached the community, Cherrywood employees safely evacuated all residents. The chaos was adeptly managed by Executive Director Michele Sepples. Thanks to the coordinated efforts of employees, families and Fusion Rehab and Wellness, all residents were safely placed with families, Balfour Longmont, Alta Vita Longmont, Accel Longmont and Hover Senior Living Longmont. Thank you, Michele, Jonathan Martin, Patricia Williams and others who stayed with the final residents, evacuating as flames were seen across the street.

Redirecting those living with dementia is challenging in normal circumstances. The fact that employees were able to quickly usher nearly 50 residents out of the community in terrifying circumstances is nothing short of miraculous. And, the challenge continues today as residents are now together at the main Balfour campus in Louisville. As expected, many of these vulnerable individuals with dementia are experiencing adjustment reactions and trauma responses. Cherrywood employees are patiently and lovingly by their sides.

On behalf of the Cherrywood Village families, I extend our deepest gratitude for keeping our loved ones safe.

**Mary Malina**

*Lafayette*

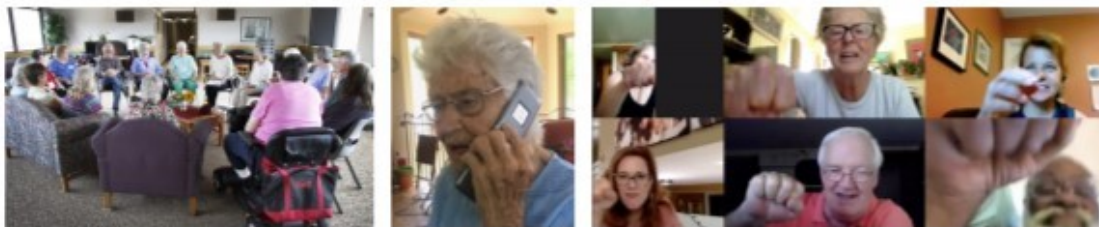
Donate to [Boulder County Wildfire Fund](#)

## Get Trained to Become a CircleTalk™ Leader!

Join us on April 5, 2022

as we begin another 5-week CircleTalk™ Virtual Leader Course.

The three ways to CircleTalk... Face to face, phone conferencing and video



Learn the skills and get the CircleTalk™ Curriculum to create a rich social space and lead the conversations to authentically connect people to each other!

**Learn More and Register [HERE](#)**

[Subscribe](#)[Past Issues](#)[Translate ▼](#)[RSS](#)

In peace and health, Deb



Copyright © 2022 CircleTalk™, All rights reserved.

Want to change how you receive these emails?  
You can [update your preferences](#) or [unsubscribe from this list](#).